



Primary Years
Programme



LADY ANDAL SCHOOL

An IB MYP Candidate School

BROCHURE

The Madras Seva Sadan








Aarambha

Origins

Founded in 1928 by Sir & Lady M. Venkatasubba Rao, The Madras Seva Sadan imparted to the less fortunate women such education and training as would render them able, self-supporting, and self-reliant. Beyond meeting the fundamental needs of these women, this organization purveyed a new purpose and meaning in life to these women. Equipped and empowered with job skills, these women grew to thrive as independent members of society.

Though it continues to provide for the disadvantaged section of society, it now encompasses some of the most prominent educational institutions that have produced some very noteworthy personalities.



Our Founders



Sir M. Venkatasubba Rao

A benevolent philanthropist, he was appointed as a Judge on the Original Side of the Madras High Court. He was knighted in the year 1936 in honour of his outstanding ability and contribution as a Judge. He was the recipient of the King George V Silver Jubilee Medal in 1935 and The King George VI's Coronation Medal in 1937. He was known for his quest for justice, and the consequential truth. His magnanimity is apparent in the creation of The Madras Seva Sadan.



Lady Andal Venkatasubba Rao

Educated at a time when educating a woman was frowned upon by the society, she set about to enrich and empower the lesser privileged. The Madras Seva Sadan grew in leaps and bounds under her firm and nurturing guidance. Lady Andal worked tirelessly, whether it was breaking barriers related to caste, creed, religion and social stigma or organizing events for the Madras Seva Sadan.



Mrs. C. Prema Kumar

Known for her sharp business acumen, Mrs. Kumar, the grand-niece of Sir M. Venkatasubba Rao and Lady Andal Venkatasubba Rao, dreamed of setting up a child-centric school. A pioneer in inclusive education in India, she worked tirelessly towards integrating differently abled children in mainstream education. Being an exemplary visionary and perfectionist, she was the driving force behind The Madras Seva Sadan schools and was always at the forefront of activities that promoted education, sports and social welfare.

Yathra

Our Journey

1928

The Madras Seva
Sadan

Lady Andal
Venkatasubba Rao
School

1987

2012

Sir Mutha School

Lady Andal School

2019






Siddhanta

Our Vision

We aim to create a holistic individual by providing a happy atmosphere for the child. Focusing on the all round development of the child with an emphasis on individual academic brilliance and excellence on the field through games and athletics.

We help build cultural and social skills among our learning community which foster an environment that is conducive to the teaching and learning process.



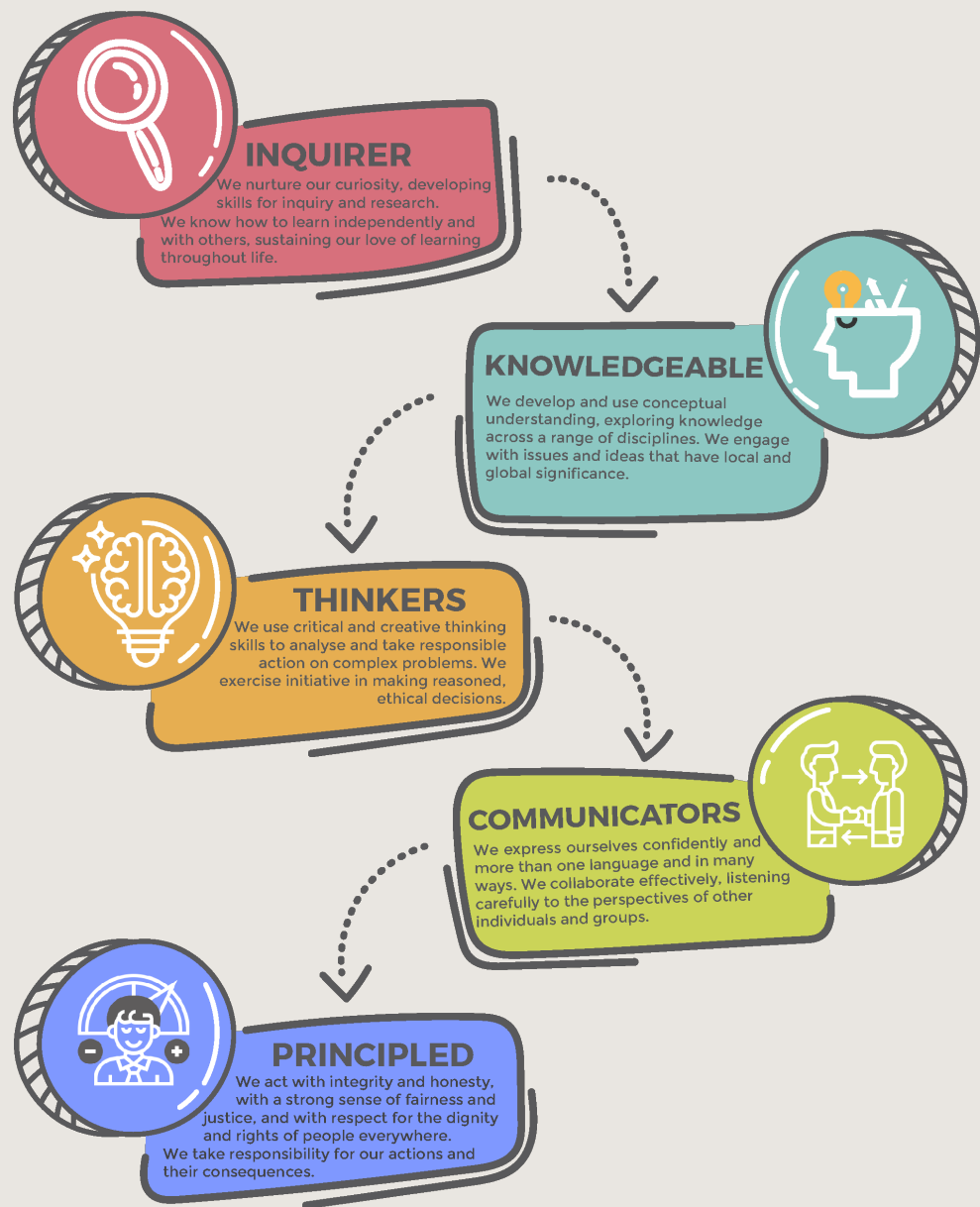
IB Mission Statement

The International Baccalaureate® aims to develop inquiring, knowledgeable and caring young people who help to create a better and more peaceful world through intercultural understanding and respect.

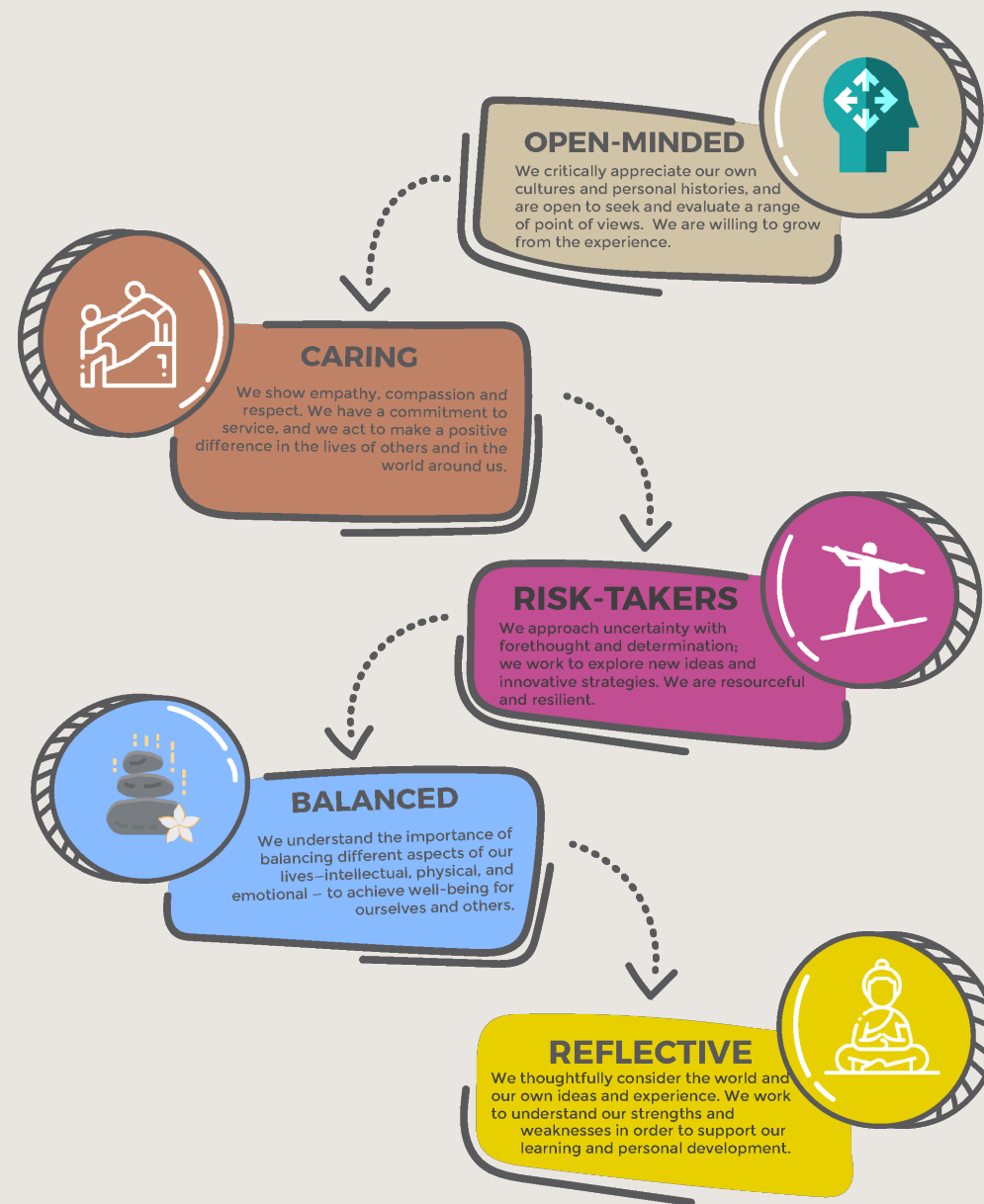
To this end the organization works with schools, governments and international organizations to develop challenging programmes of international education and rigorous assessment.

These programmes encourage students across the world to become active, compassionate and lifelong learners who understand that other people, with their differences, can also be right.





I B L E A R N E R P R O F I L E






Prastavika

An introduction

‘Integrity, insight and inclusiveness are three qualities of leadership.’

Keeping these values in mind, a clear purpose and goal is set to build on the present, for a bountiful future. The leadership guides and motivates the team to a desired goal, while being empathetic to the betterment of the community as a whole.



Educational Philosophy

The how, why, when, and where to learning lies in everyone's subconscious mind. To educate, is not merely to enhance the intelligence of a person, but to nurture the intellect.

Education

B.A. English Literature
Finance Management, LIBA

Esteemed Positions

- Hony., Gen., Secretary - The Madras Seva Sadan
- Correspondent
 - The Madras Seva Sadan Mat., Hr., Sec., School (Chetpet)
 - The Madras Seva Sadan Mat., Hr., Sec., School (Tambaram)
 - Lady Andal Venkatasubba Rao Mat., Hr., Sec., School
 - Sir Mutha School
 - Lady Andal School
- Director
 - Lady Andal House of Children
- Member, Soroptimist International
- Vice President
 - National Association for the Blind – Tamil Nadu State Branch
 - Madras District Aquatic Association
 - District Aquatic Association



Mrs. Krithika Kumar Quintal

Correspondent, Lady Andal School



Educational Philosophy

Education inspires us to embark on the quest for truth through the spirit of inquiry. It also empowers us with the knowledge, skills and values to embrace change and forge ahead with confidence.

Education

M.A., B.Ed., M.Phil (Eng)

Esteemed Positions

- Joint Correspondent
 - Lady Andal Venkatasubba Rao Mat., Hr., Sec., School
 - Sir Mutha School
- Head of School
 - Lady Andal School
- Governing Body Member – The Madras Seva Sadan



Mrs. Tamara Ann Coelho

Head of School, Lady Andal School



School is a place of happiness, warmth and security, where learning takes place simultaneously at every moment you are here.

It is with immense pride and joy that I welcome you on board Lady Andal School. Steeped with a rich legacy, the Madras Seva Sadan has been an embodiment of our founders' dreams and aspirations. Lady Andal School, is one of these living dreams, thriving under this magnificent institution.

At Lady Andal, one is transformed into holistic individuals who are agentic and responsible world citizens. We recognize that learning is an endeavour that requires everyone to contribute collectively towards the overall development of the child. Hence, we encourage all our stake holders to actively and positively collaborate with us as we make this journey towards becoming an IB World Continuum School.

Our young ones, who eagerly aspire to embody the vision of the school, keeping in mind the IB ideologies, are inventing themselves everyday into international – minded individuals who care deeply for their surroundings and are proud vanguards of their cultures. Our faculty is made up of experienced and experiential educators who make Inquiry come alive in their classrooms with their informed practices. We take each other's perspective into consideration as we celebrate human commonalities and a shared belief in our school's motto.

We are constantly evolving as we step on one milestone after the other. Our learning journey has just begun as we witness our learners grow into individuals who are committed towards the cause of a better tomorrow. We look forward towards enriching the future, keeping in mind our precious heritage.



Ms. Michelle Teresa Noronha Kharshiing

MYP Coordinator, Lady Andal School



Lady Andal School is renowned for providing its students with quality education. I am delighted to extend a warm and hearty welcome to you as we extend our journey as a PYP World School. As the Primary Years Programme Coordinator, it is my pleasure to introduce you to a year filled with curiosity, exploration, and learning.

The PYP is a framework that not only nurtures academic excellence but also fosters the holistic development of our young learners. It encourages them to become inquirers, thinkers, communicators, and risk-takers. Through an inquiry-based approach, our students will delve into meaningful and relevant questions, sparking their curiosity and igniting their passion for learning.

At Lady Andal School, we are dedicated to providing a nurturing and inclusive environment where every child's unique talents and abilities are recognized and celebrated. Our committed educators are here to guide and support your child's journey, creating a safe and stimulating atmosphere where they can thrive academically, socially, and emotionally.

I encourage you, as parents and guardians, to actively participate in your child's education journey. Your support and involvement are invaluable in creating a strong partnership between home and school. Together, we can ensure that our young learners reach their fullest potential.

Once again, I extend a warm welcome to all new and returning families to the Primary Years Programme at Lady Andal School. Let us work hand in hand to make this academic year a truly enriching and memorable experience for our students. Here's to a year of inquiry, growth, and success!



Ms. Suhaina Sultan

PYP Coordinator, Lady Andal School





Ksara

Credos of our School

The four pillars of Lady Andal school stands steady and strong as they uphold the vision and ideology of the institution.

The four pillars of Lady Andal school - legacy, innovation, global outlook and personalized learning, stand toweringly high and strong as they support the credos and ideology of the institution. We proudly celebrate our legacy that has shaped us, and going forward, enables us to envisage a future that blends global perspectives while staying true to our roots, making us truly contemporary.



THE FOUR PILLARS

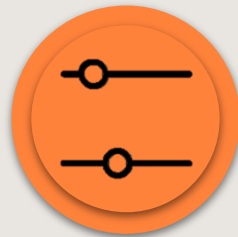
LEGACY



INNOVATION



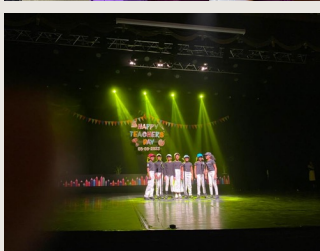
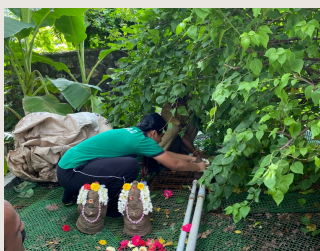
PERSONALIZED
LEARNING



GLOBAL OUTLOOK












Sambedha

Confluence of education and values

A scholar is one who is rich in character and competence. As educators, we take up the responsibility of grooming young minds to respect and value humanity on the whole. We intend to inspire our students to be global citizens and pivotal members of the society.

Our motto is to emphasize on independent thinking as well as to act upon taught values. Such service and action requires us to impart real-world skills to infuse entrepreneurial and social values complementing subject knowledge of students.





LEARNER PROFILES

Inquirer

Thinkers

Communicator

Principled

Knowledgeable

Caring

Balanced

Risk taker

Open-minded

Reflective

SHADES

TINTS

AESTHETICS

KEY CONCEPTS

CHANGE

COMMUNICATION


IDENTITY



Pathyakrama

The Educational Framework

Our teaching methods and curriculum frameworks are research-based and drawn from the best educational practices from systems around the world. Such a rigorous academic programme enables students to direct their own learning pathway and develop the skills and confidence they need to thrive and make a lasting difference.



The Primary Years Programme

The Primary Years Programme (PYP) is designed for students aged four to ten years. It focuses on the development of the child as an inquirer, both in the classroom and the world outside. The PYP is a transformative experience for the students, teachers and the whole school community. The programme at Lady Andal School is aimed for students from EYP I to PYP V.

Our curriculum focuses on connecting abstract concepts to the real world. Theoretical proficiency is scaffolded with practical exercises to gain experiential learning, which is often supplemented with reflection time for self-evaluation. Such an educational approach enables students to make connections between subjects and help transfer their contextual knowledge in their day to day lives making learning fun, effective, and exciting.



The Primary Years Programme

Whilst inquiry is a pedagogical approach, we are committed to develop agency in students which will empower them to co-construct and self-adjust their learning experiences, build self-efficacy, a greater sense of ownership and contribute to their social, emotional and cognitive growth. The learning community plays a vital role in supporting and nurturing student agency in the PYP.

At Lady Andal School, we do not compartmentalize learning by subjects, but rather explore content within the context of inquiry. Our students understand the interconnectedness of subject areas through exploring concepts, ideas, and issues of local and global significance. In doing so, they acquire in-depth knowledge and develop understanding across a broad and balanced range of disciplines.

VOICE



Guide and direct learning.
Propose and initiate action.
Participate in decision making

CHOICE



Co-construct learning goals. Engage with multiple perspectives.

OWNERSHIP



Define and reflect on own learning goals.
Taking action.

The Middle Years Programme

The Middle Years Programme (MYP) of the International Baccalaureate (IB) is a course of study for students aged between 11 and 16 years; Grades 6–10 at Lady Andal School. In the MYP, the learner is at the core to emphasize holistic development of the person.

Through Approaches to Learning and Teaching, students develop the skills which allows them to think, question and collaborate with others. Their disciplinary understanding is underpinned by conceptual learning, which enable them to make connections to real-world global contexts. Service allows students to take action in the local and global community. The personal project is a student-centered exploration of their personal interests, which assesses students' ATL skills.

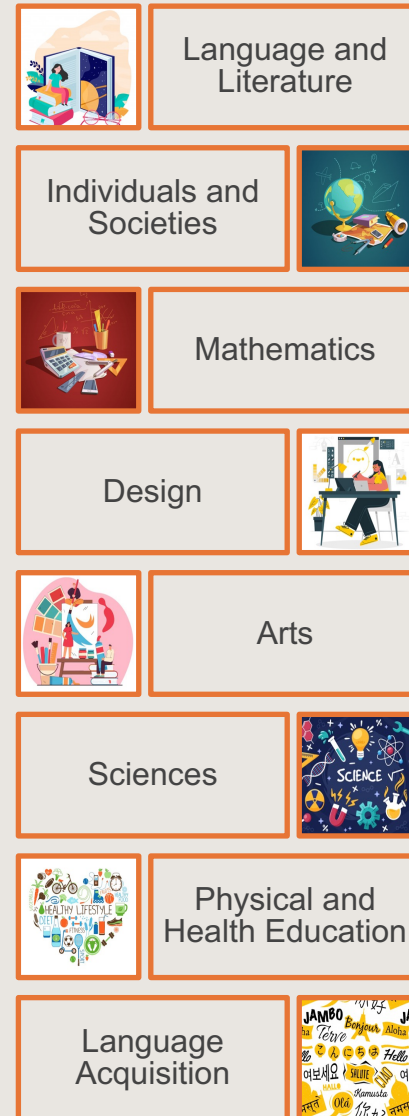


The Middle Years Programme

The eight subject groups are offered as multiple disciplines. Interdisciplinary projects help students make connections between subjects.

MYP units are built around key concepts and global contexts. Together, these frame subject-specific inquiries that are conceptually driven and set within authentic, real-life contexts.

These global contexts form a common language between all subject areas and aims to encourage international mindedness and global engagement within the programme. When students experience such meaningful and relevant learning, they are more likely to be engaged.



Our Assessment Philosophy

At Lady Andal School, assessments are considered as an integral part of student growth to promote lifelong learning in all our students. Assessment is an ongoing process of gathering, analyzing, reflecting and acting on evidence of student learning to inform teaching. Students actively engage in assessing and reflecting on their learning and act on feedback from peers to further their learning. Learning goals and success criteria are co-constructed and clearly communicated. In our classrooms, both learning outcomes and the learning process are assessed.

The nature of assessment at Lady Andal School is varied, creative and challenging, which promotes critical thinking and metacognitive development. We recognize the importance of assessing the process of learning in addition to the final product. Hence, our assessments happen throughout a unit by way of diagnostic, formative and summative assessments.



Types of Assessment



Diagnostic Assessment

- Provides information on what learners know.
- Students are provided with necessary support during the course of the inquiry.

Formative Assessment

- Promotes deeper understanding through frequent feedback and reflections.
- Students are involved through peer and self-assessment.


Summative Assessment

- Culmination of the teaching and learning process of a unit.
- Opportunity to demonstrate understanding and promotes action.

In the PYP, students have an opportunity to conduct an in-depth and collaborative inquiry as a culmination of the final year of the student's primary education – The PYP Exhibition. It is a platform for students to showcase their understanding, to apply knowledge and skills, to reflect, and often to make a contribution to a cause or stimulate positive change.

In the MYP, assessment is criterion-based, so that students are assessed against published, agreed learning objectives. The subject criteria are based on the learning objectives mandated by the IB. The summative assessment achievement levels count towards the final semester grades for each subject.

Students in the MYP are offered the opportunity to engage in the community project and the personal project. These projects are student-centred and age-appropriate, and they enable students to engage in practical explorations through a cycle of inquiry, action and reflection.






Suvidha

A comforting environment

The school environment plays a pivotal role in cultivating the acquired personality of an individual. At Lady Andal School, we educators have internalised the need to constantly evolve to ably guide and nurture the young minds. We co-create developmental spaces for our learning community – educators and students; to inspire ideas and discover the latent possibilities.



Our learning environment





Lakshya

A hopeful future

Lady Andal School desires to be an IB Continuum School, offering all three IB programmes viz. PYP, MYP and DP. We are a IB World School for the PYP and at present are a candidate school* for the MYP. This school is pursuing authorization as an IB World School. IB World Schools share a common philosophy - a commitment to high-quality, challenging, international education - that we believe is important for our students.

Only schools authorized by the IB Organization can offer any of its four academic programmes: the Primary Years Programme (PYP), the Middle Years Programme (MYP), the Diploma Programme (DP), or the Career-related Programme (CP). Candidate status gives no guarantee that authorization will be granted. For further information about the IB and its programmes visit <http://www.ibo.org>.

Understanding the evolving socio-economic dynamics, we are developing state-of-the-art facilities, prepping our students to take on global challenges such as sustainability & climate change, ethical AI integration etc.

Our beautiful new Campus

Exterior Front View



Cafeteria



Seminar Hall



Conference Room



Resource Centre



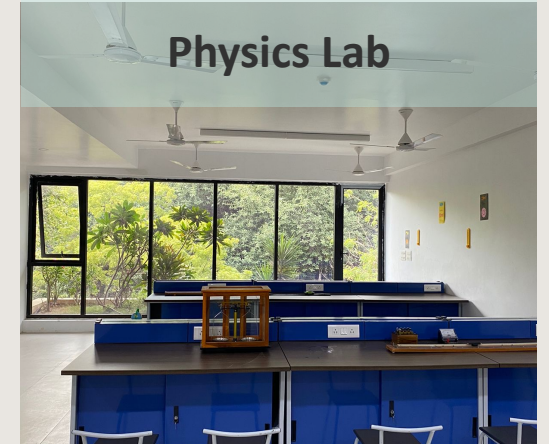
Biology Lab



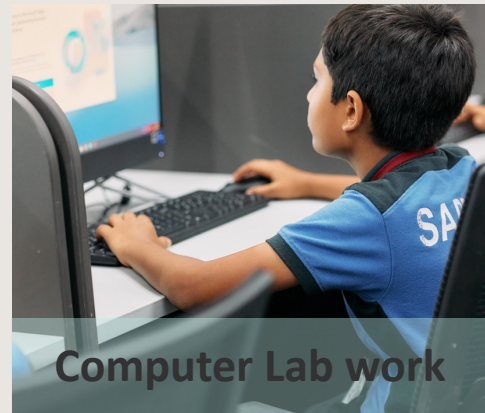
Chemistry Lab



Physics Lab







Our learning environment





LADY ANDAL SCHOOL

-  Shenstone Park, No. 7, Harrington Road, Chetpet, Chennai - 600031
-  044 – 4266 4085 / +91 73586 99957
-  admin@ladyandalschool.edu.in
-  www.ladyandalschool.edu.in